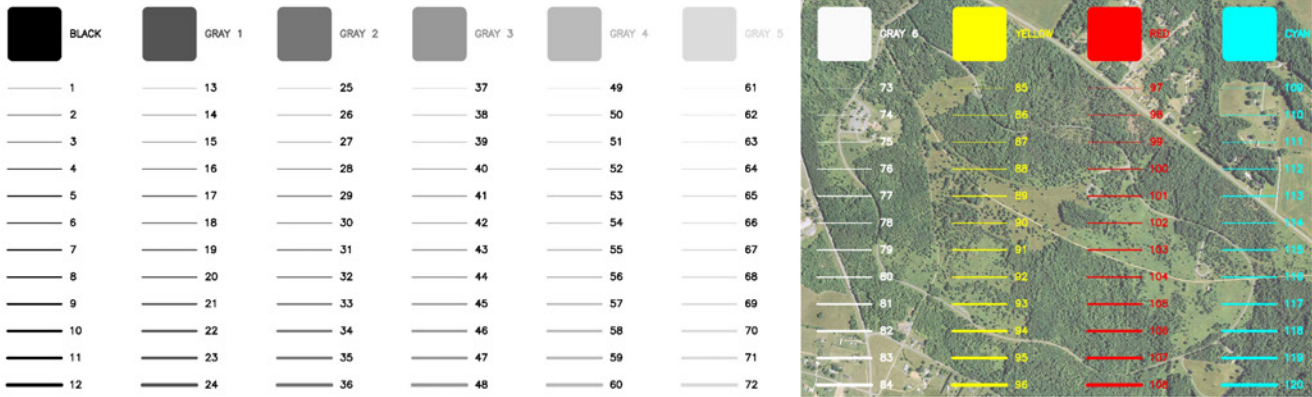
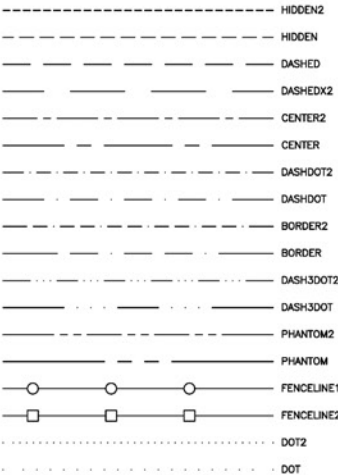


CED CAD Standards Synopsis

CED STANDARD LINEWEIGHTS AND SCREENING



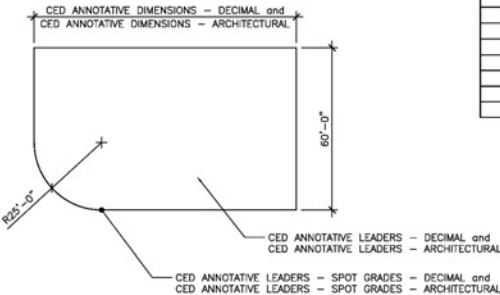
CED STANDARD LINETYPES



CED STANDARD TEXT AND DIMENSIONS

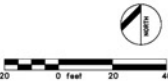
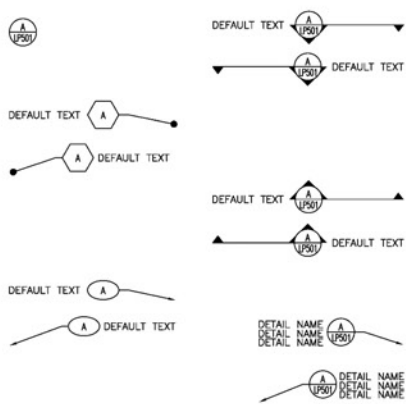
ROMANS.SHX IS THE STANDARD FONT, AND IS DEFINED BY THE TEXT STYLE "CED ANNOTATIVE TEXT - DECIMAL" AND "CED ANNOTATIVE TEXT - ARCHITECTURAL" DEPENDING ON TEMPLATE CHOSEN. 0123456789 _-I0#%*~&*()<>[]|}

ROMAND.SHX IS THE TITLEBLOCK FONT, AND IS DEFINED BY THE TEXT STYLE "CED TITLEBLOCK" IN BOTH TEMPLATES. 0123456789 _-I0#%*~&*()<>[]|}



ARCHITECTURAL SCALE FACTORS	
1/32"=1'-0"	3072
1/16"=1'-0"	1536
1/8"=1'-0"	768
3/16"=1'-0"	384
1/4"=1'-0"	192
5/16"=1'-0"	128
3/8"=1'-0"	96
7/16"=1'-0"	64
1/2"=1'-0"	48
5/8"=1'-0"	32
3/4"=1'-0"	24
7/8"=1'-0"	16
1"=1'-0"	12
1 1/8"=1'-0"	8
1 1/4"=1'-0"	6
1 1/2"=1'-0"	4
1 3/4"=1'-0"	3

CED STANDARD CALLOUTS



CED / UGA

COLLEGE OF ENVIRONMENT AND DESIGN
CAD STANDARDS

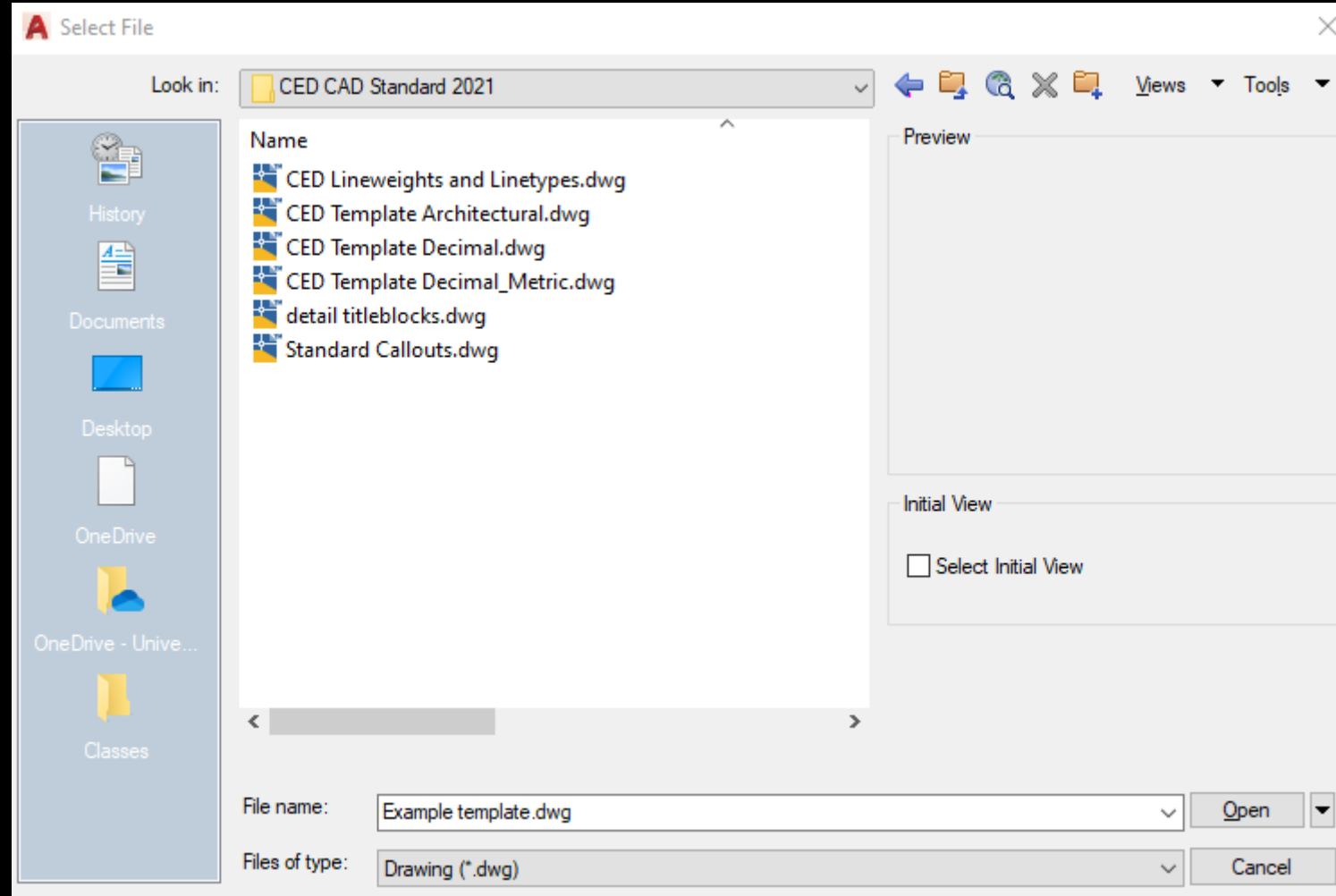
NO.	NOTES	DATE

DRAWN: TJ
DATE: 8/24/2014
SCALE: 1"=20'

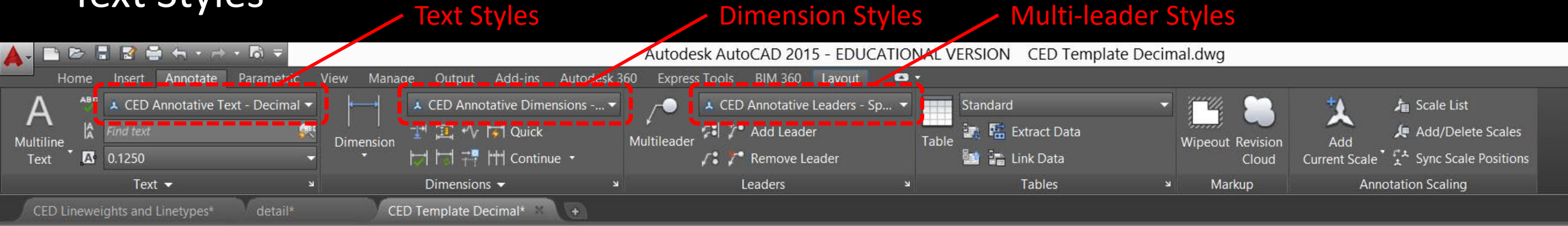
SHEET TITLE:
STANDARD LINE WEIGHTS,
LINE TYPES, TEXT STYLES,
DIMENSION STYLES, AND
GENERAL EXAMPLES

SHEET NUMBER:
1

Templates and included CAD files



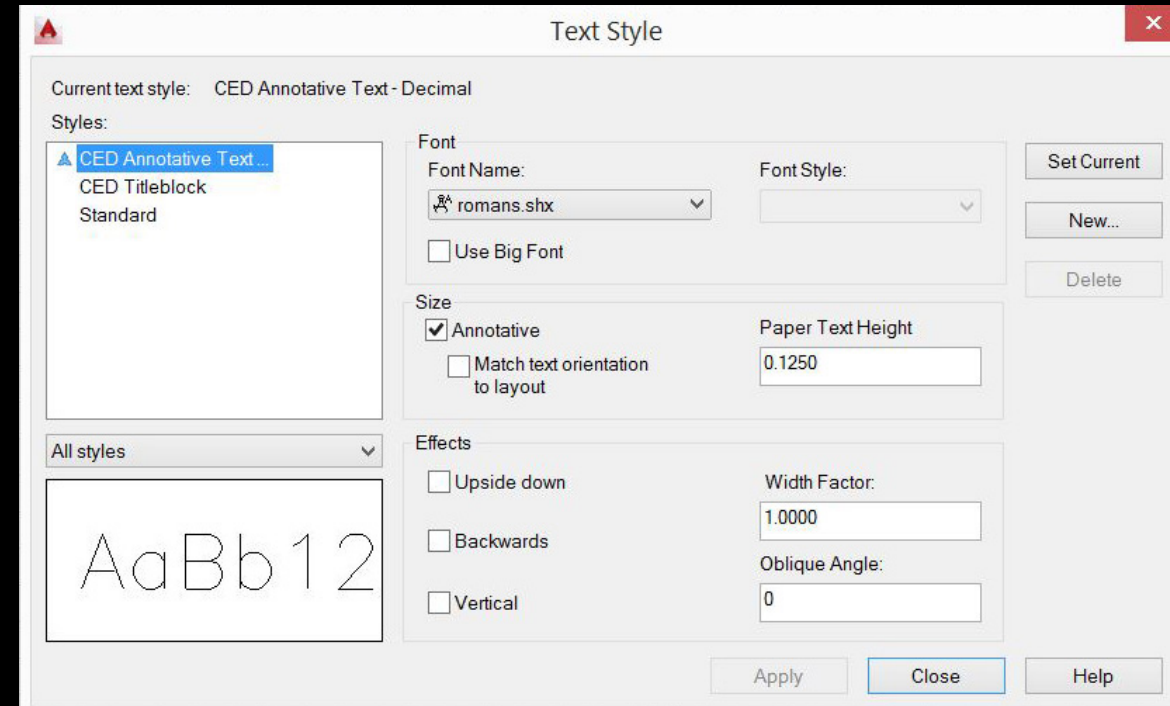
Text Styles



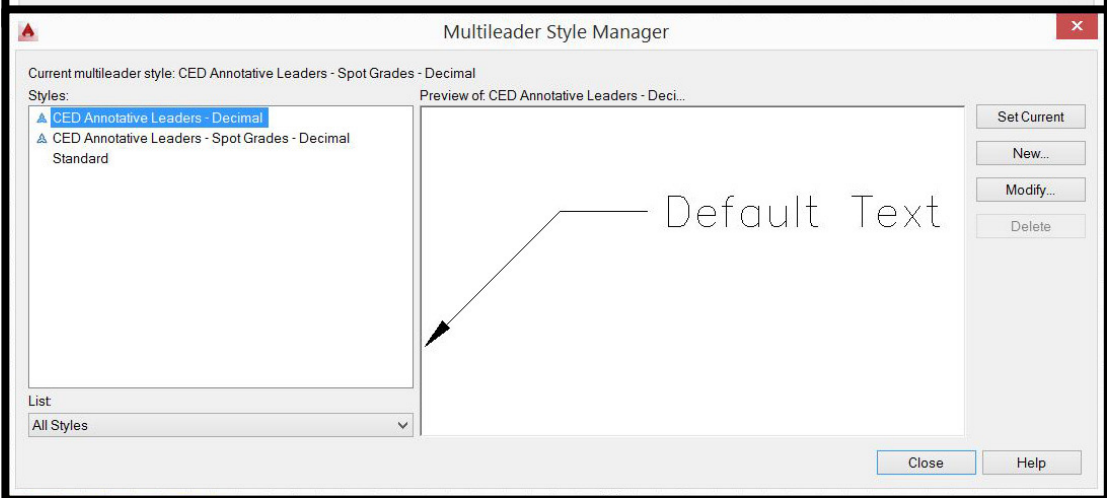
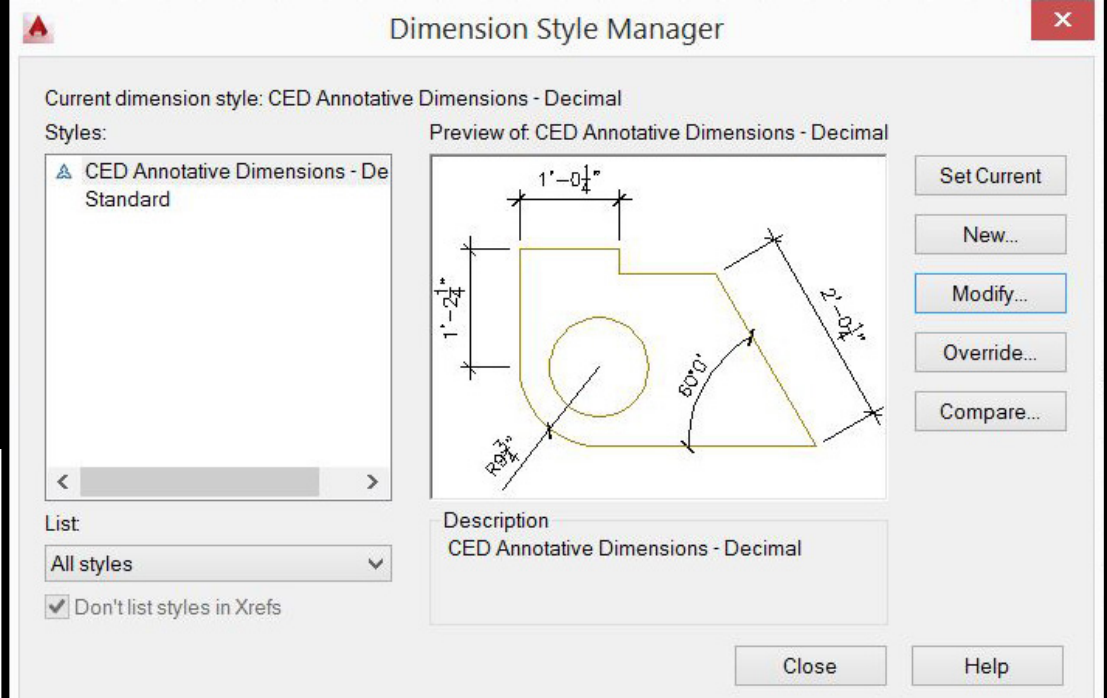
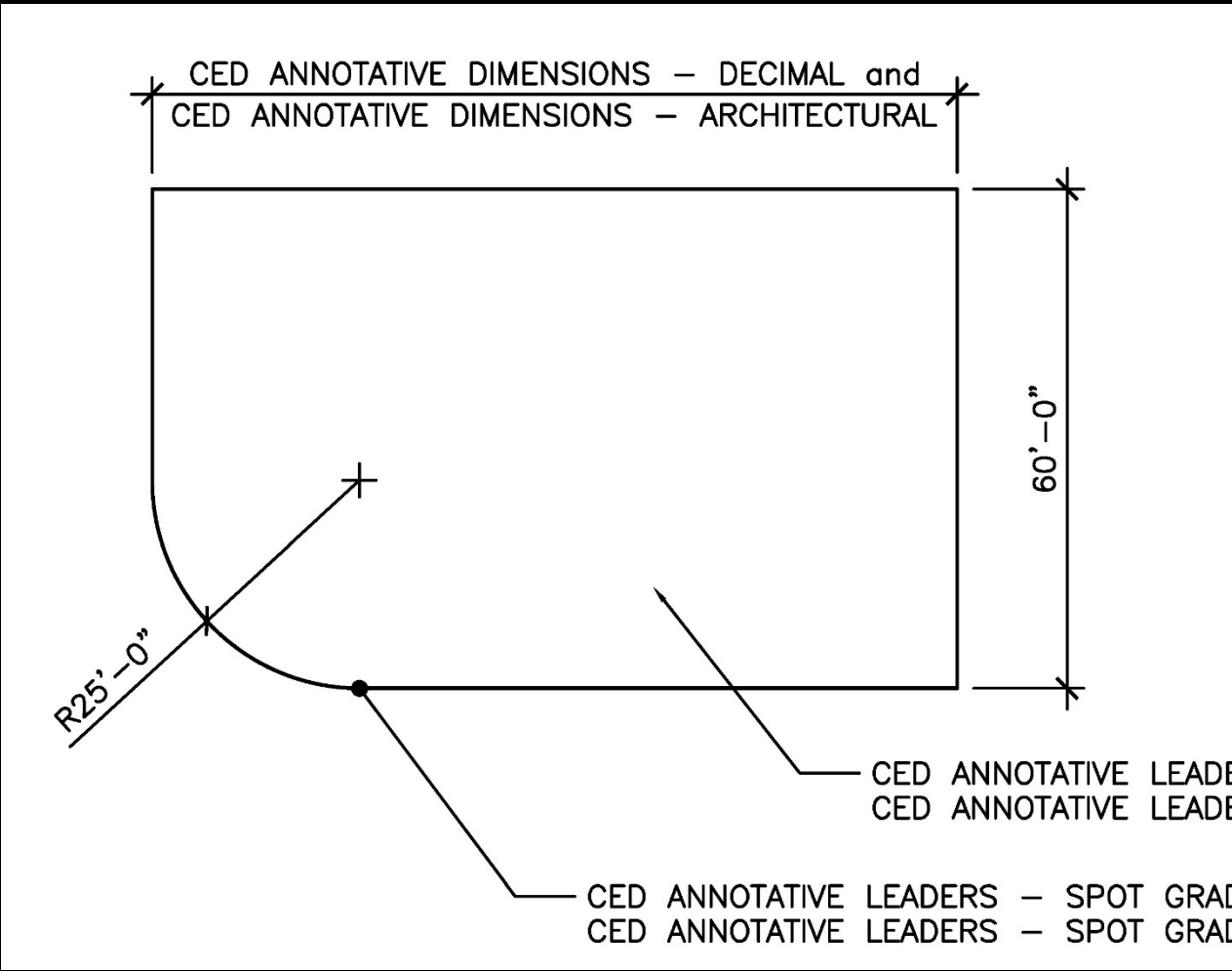
CED STANDARD TEXT AND DIMENSIONS

ROMANS.SHX IS THE STANDARD FONT, AND IS DEFINED BY THE TEXT STYLE "CED ANNOTATIVE TEXT – DECIMAL" AND "CED ANNOTATIVE TEXT – ARCHITECTURAL" DEPENDING ON TEMPLATE CHOSEN. 0123456789 _-!@#\$%^&*()<>[]{}

ROMAND.SHX IS THE TITLEBLOCK FONT, AND IS DEFINED BY THE TEXT STYLE "CED TITLEBLOCK" IN BOTH TEMPLATES. 0123456789 _-!@#\$%^&*()<>[]{}



Dimension / Multi-leader Styles



Titleblocks

Logo in block as CAD entities

All titleblock text information included
as editable attributes of the block:

Student Information

Project Information

Revision / Issue box

Drawn / Date / Scale box

Sheet Title

Sheet Number

North arrow is a separate block

Scale is a separate block,
with editable attributes

UNIVERSITY OF
GEORGIA
College of
Environment + Design

STUDENT NAME
STUDENT INFORMATION

PROJECT NAME
PROJECT INFORMATION
PROFESSOR
CLASS
INFORMATION

REV	DESCRIPTION	DATE
1	SCHEMATIC DESIGN	04/24/14

DRAWN: TJ
DATE: 05/24/2014
SCALE: 1"=20'

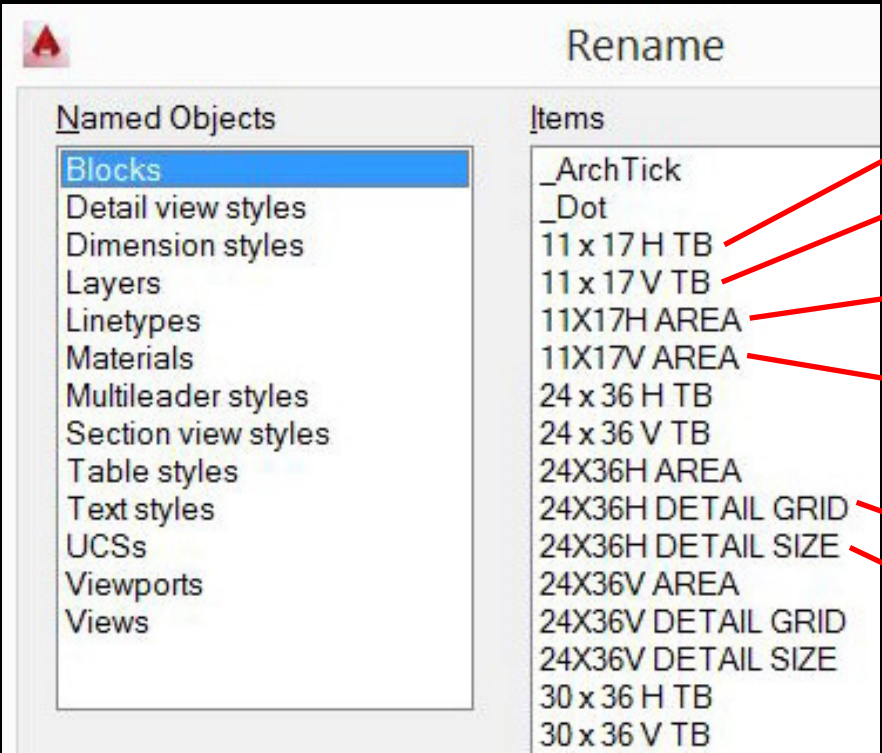
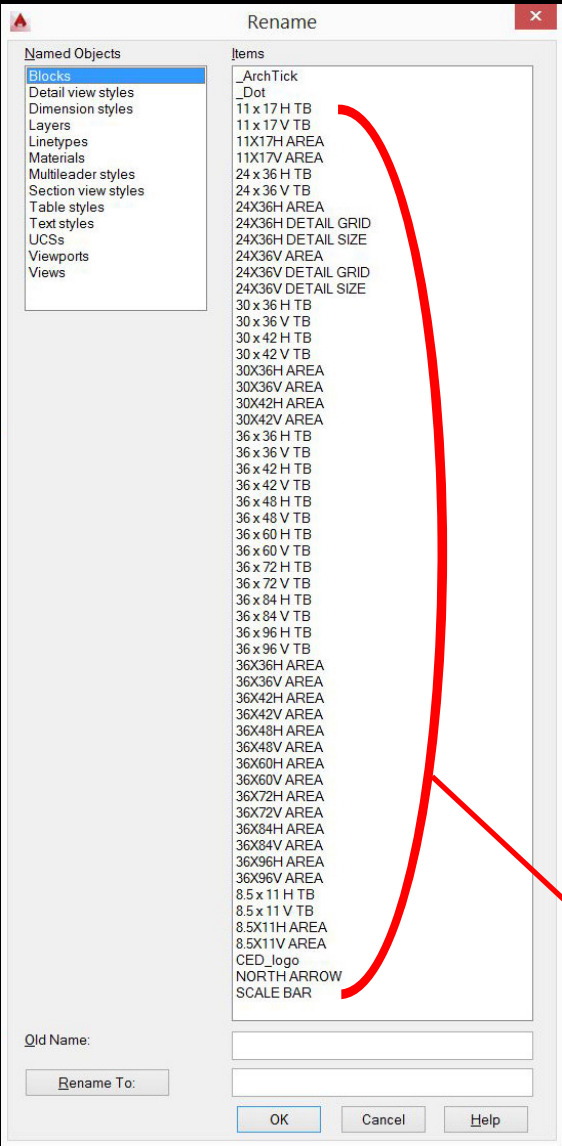
SHEET TITLE:
SITE PLAN
MAIN
ENTRANCE

SHEET NUMBER:
L-101

North arrow symbol

Scale bar: 0 10 20 40 feet

Blocks



11x17 horizontally-oriented titleblock

11x17 vertically-oriented titleblock

Plot area (use to create a saved view) for 11x17 horizontally-oriented titleblock

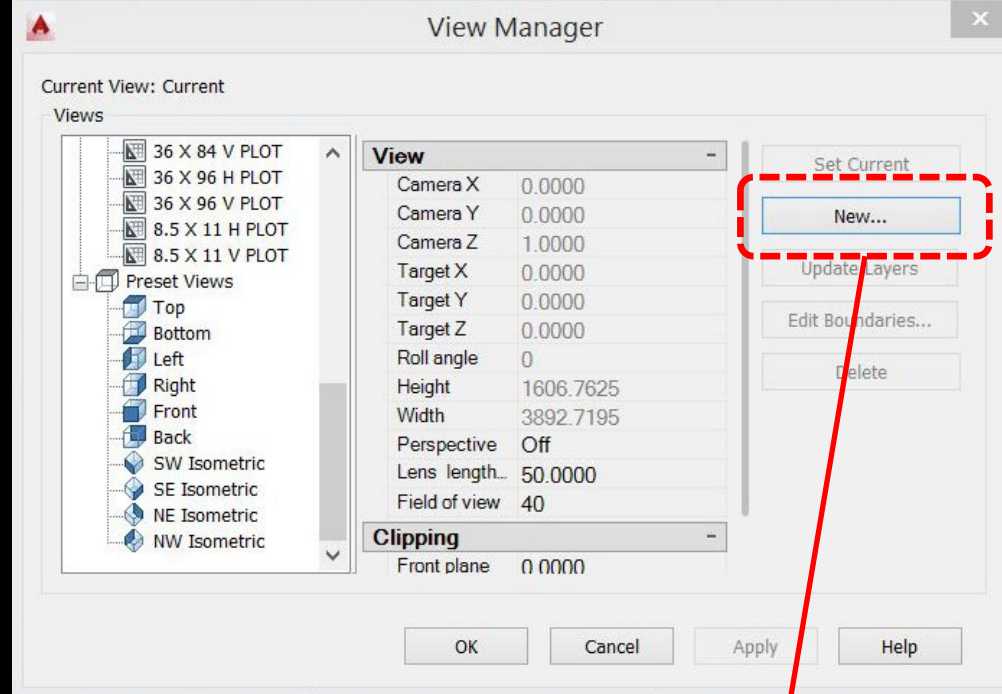
Plot area (use to create a saved view) for 11x17 vertically-oriented titleblock

Grid to aid in laying out details on a sheet

Detail size, corresponds to detail grid

Standard blocks included in CED Templates

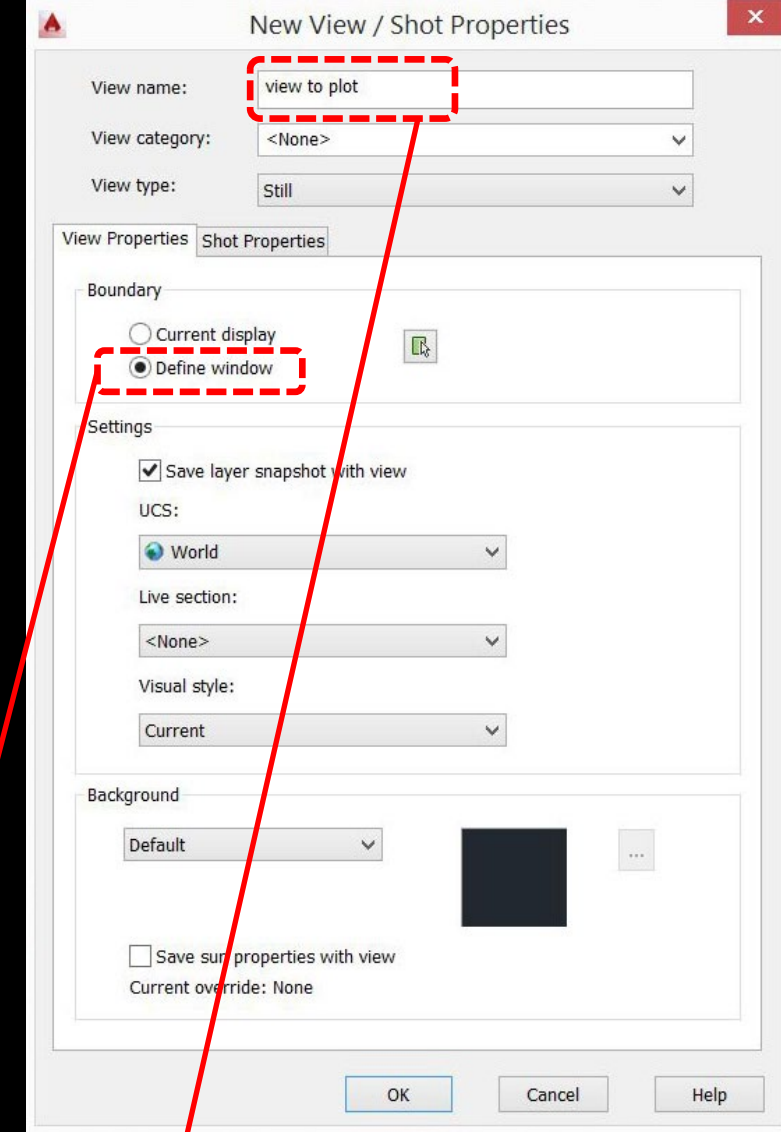
Viewport Sizes Plot Views



Create a new view...

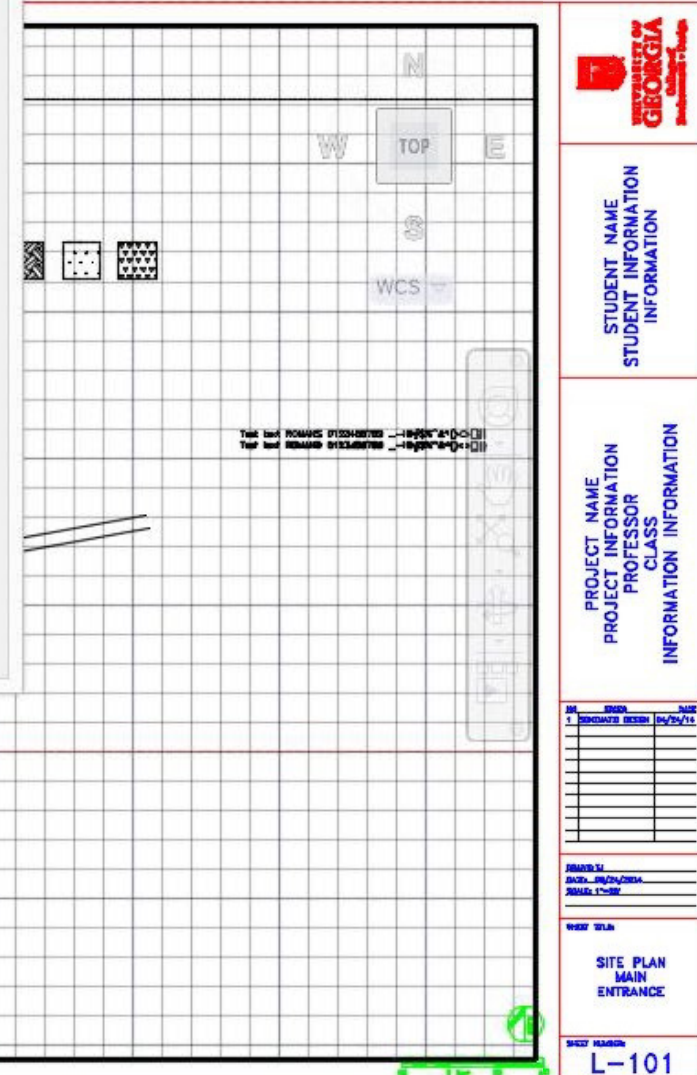
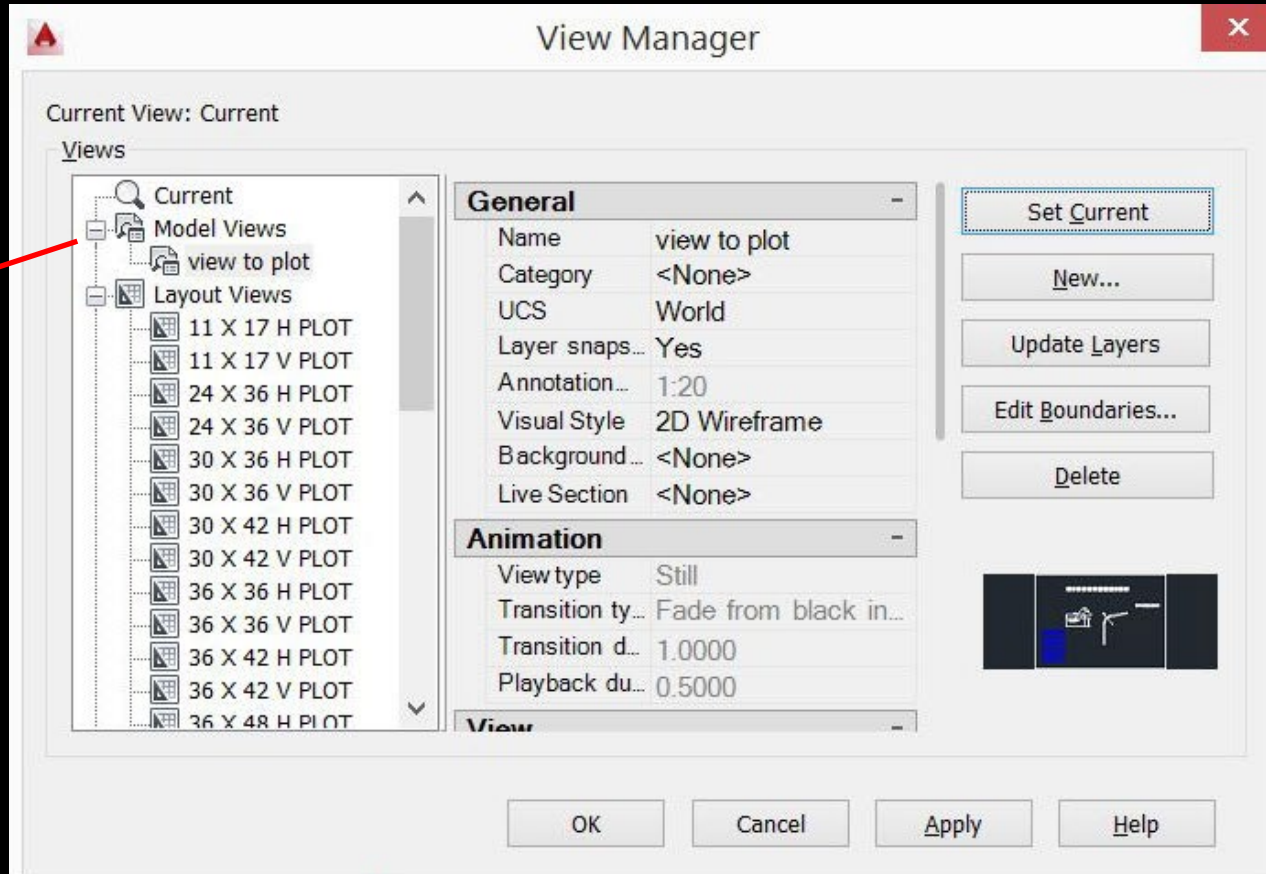
...by picking a window using the
viewport size block corners...

...and giving it a unique name that
will be used in the page setup.



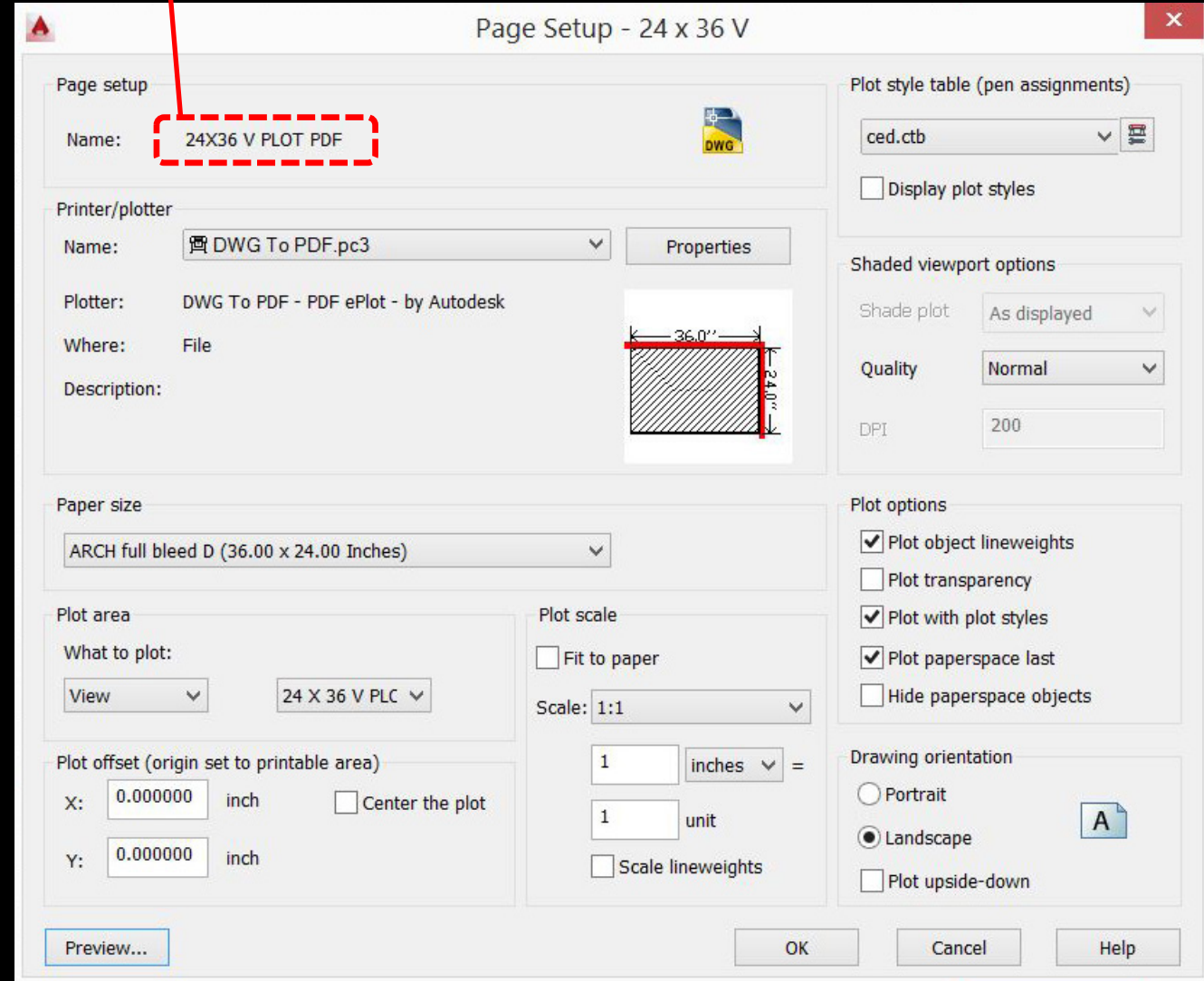
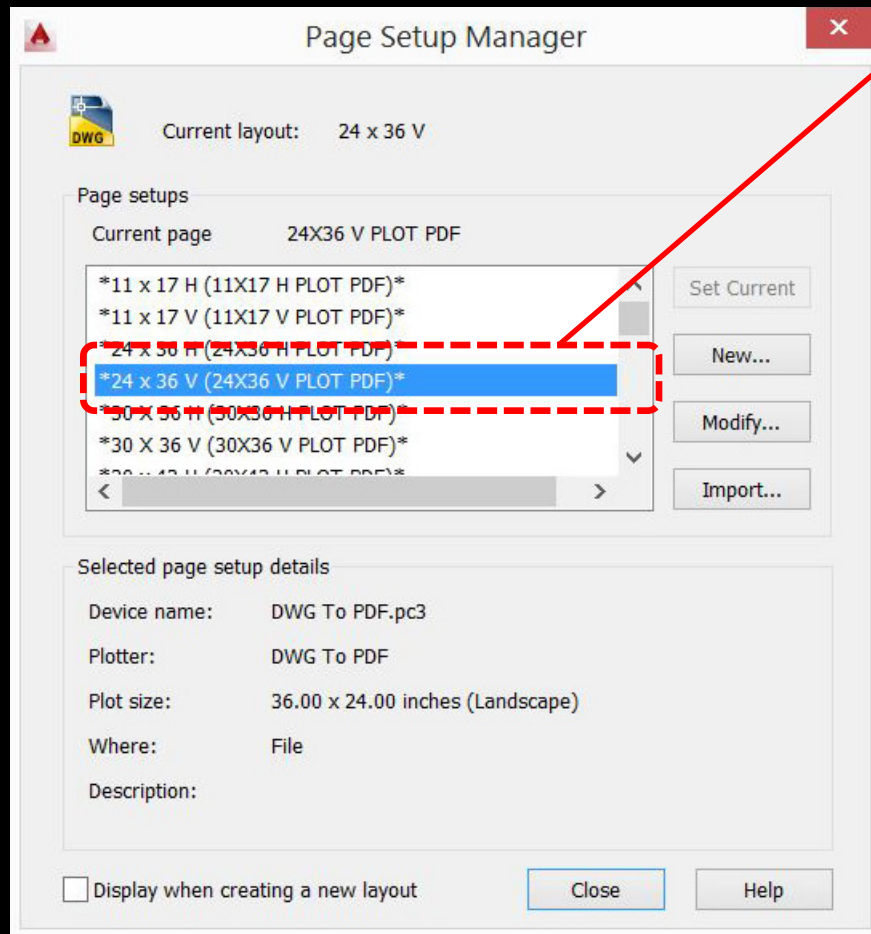
Plot Views

Set view current
in viewport



Page Setups

Named page setups for all sheet sizes
and titleblock orientations in template

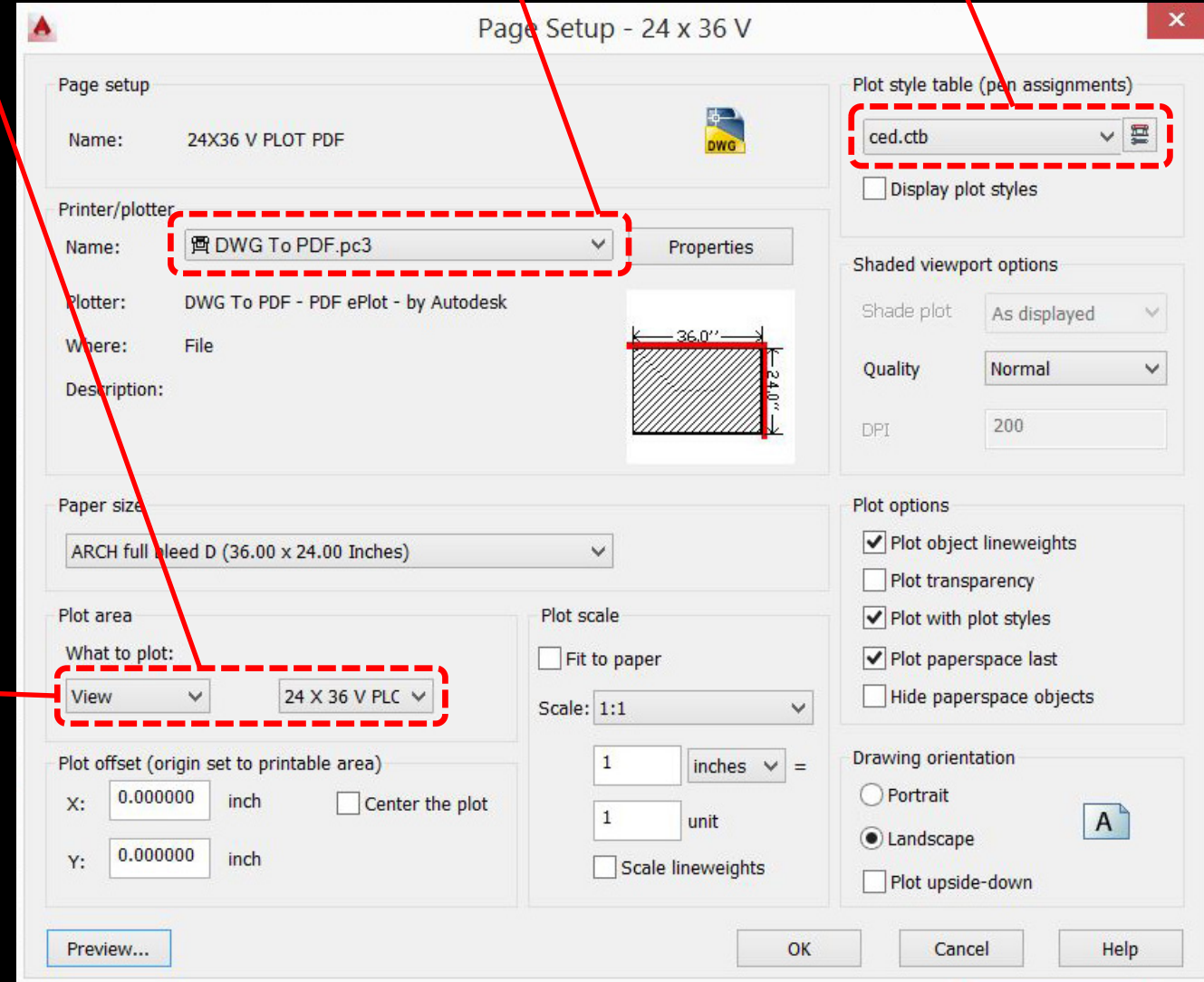
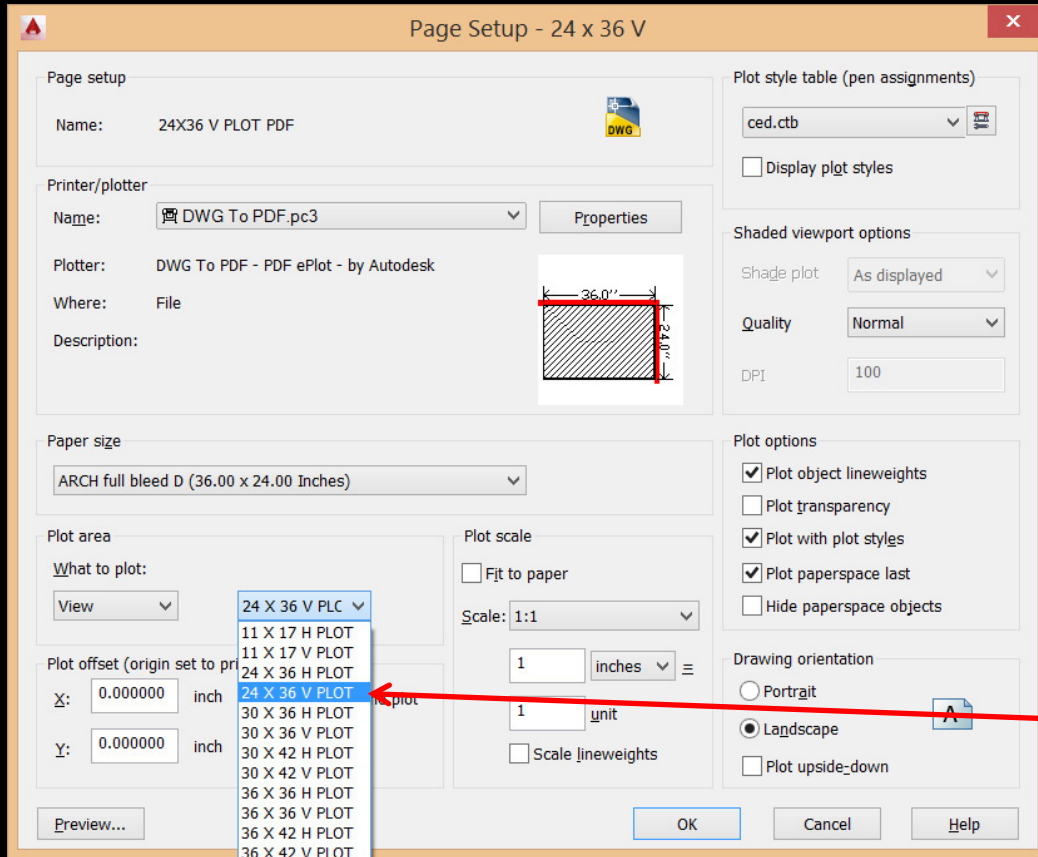


Page Setups

Set plot area to View, use
named view that matches
sheet orientation

CED standard plotter
(DWG to PDF.pmp;
DWG to PDF.pc3)

CED standard plot
style table
(CED.ctb)



CTB file

Sequence of 12 lineweights repeats...

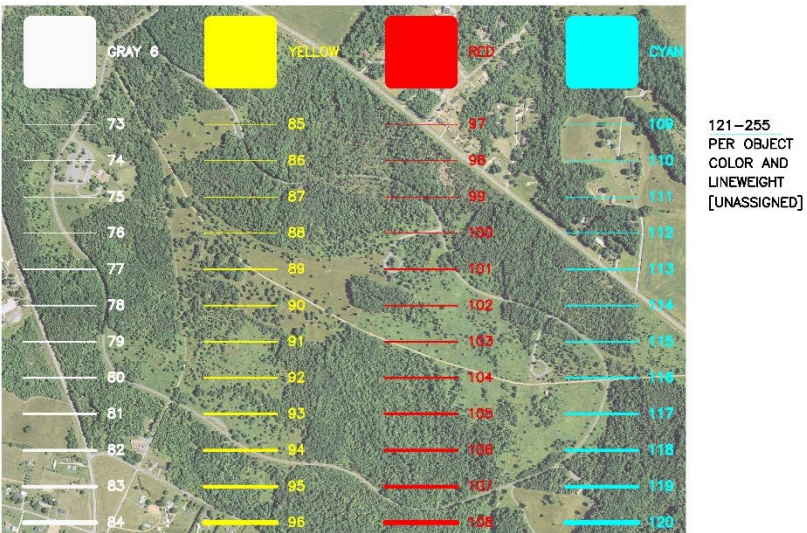
Plot Style Table Editor - ced.ctb

General Table View Form View

Name	Color 1	Color 2	Color 3	Color 4	Color 5	Color 6	Color 7	Color 8	Color 9	Color 10	Color 11	Color 12	Color 13	Color 14	Color 15
Description	Description_1	Description_2	Description_3	Description_4	Description_5	Description_6	Description_7	Description_8	Description_9	Description_10	Description_11	Description_12	Description_13	Description_14	Description_15
Color	Black	Black	Black	Black	Black	Black	Black	Black	Black	Black	Black	Black	84,84,84	84,84,84	84,84,84
Enable dithering	On	On	On	On	On	On	On	On	On	On	On	On	On	On	On
Convert to grayscale	Off	Off	Off	Off	Off	Off	Off	Off	Off	Off	Off	Off	Off	Off	Off
Use assigned pen #	Automatic	Automatic	Automatic	Automatic	Automatic	Automatic	Automatic	Automatic	Automatic	Automatic	Automatic	Automatic	Automatic	Automatic	Automatic
Virtual pen #	Automatic	Automatic	Automatic	Automatic	Automatic	Automatic	Automatic	Automatic	Automatic	Automatic	Automatic	Automatic	Automatic	Automatic	Automatic
Screening	100	100	100	100	100	100	100	100	100	100	100	100	100	100	100
Linetype	Use object linetype	Use object linetype	Use object linetype	Use object linetype	Use object linetype	Use object linetype	Use object linetype	Use object linetype	Use object linetype	Use object linetype	Use object linetype	Use object linetype	Use object linetype	Use object linetype	Use object linetype
Adaptive adjustment	Off	Off	Off	Off	Off	Off	Off	Off	Off	Off	Off	Off	Off	Off	Off
Lineweight	0.0508 mm	0.1778 mm	0.2794 mm	0.3810 mm	0.5080 mm	0.5588 mm	0.6096 mm	0.7112 mm	0.7874 mm	0.9906 mm	1.1938 mm	1.5748 mm	0.0508 mm	0.1778 mm	0.2794 mm
Line End Style	Use object end style	Use object end style	Use object end style	Use object end style	Use object end style	Use object end style	Use object end style	Use object end style	Use object end style	Use object end style	Use object end style	Use object end style	Use object end style	Use object end style	Use object end style
Line Join style	Use object join style	Use object join style	Use object join style	Use object join style	Use object join style	Use object join style	Use object join style	Use object join style	Use object join style	Use object join style	Use object join style	Use object join style	Use object join style	Use object join style	Use object join style
Fill Style	Use object fill style	Use object fill style	Use object fill style	Use object fill style	Use object fill style	Use object fill style	Use object fill style	Use object fill style	Use object fill style	Use object fill style	Use object fill style	Use object fill style	Use object fill style	Use object fill style	Use object fill style

CED STANDARD LINEWEIGHTS AND SCREENING

BLACK	GRAY 1	GRAY 2	GRAY 3	GRAY 4	GRAY 5
1	13	25	37	49	61
2	14	26	38	50	62
3	15	27	39	51	63
4	16	28	40	52	64
5	17	29	41	53	65
6	18	30	42	54	66
7	19	31	43	55	67
8	20	32	44	56	68
9	21	33	45	57	69
10	22	34	46	58	70
11	23	35	47	59	71
12	24	36	48	60	72

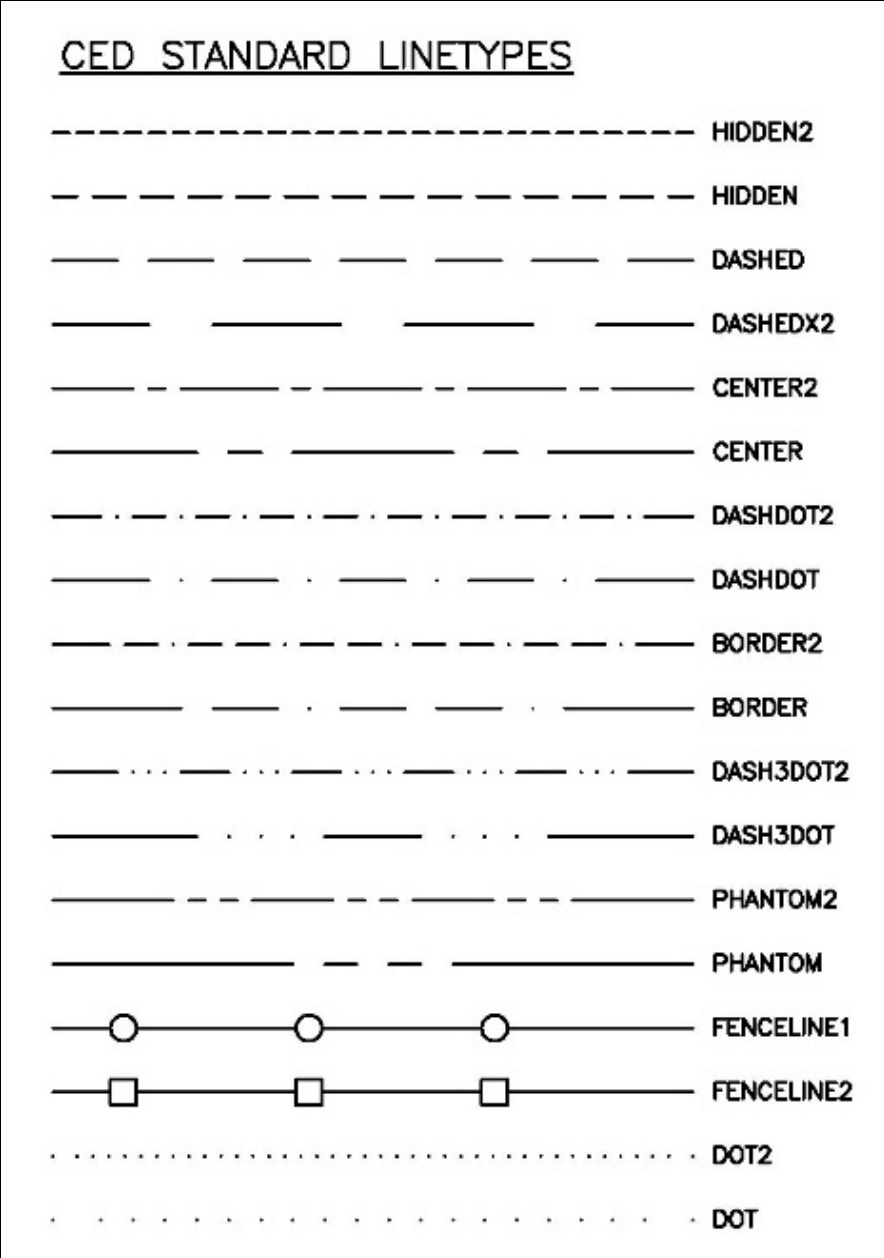
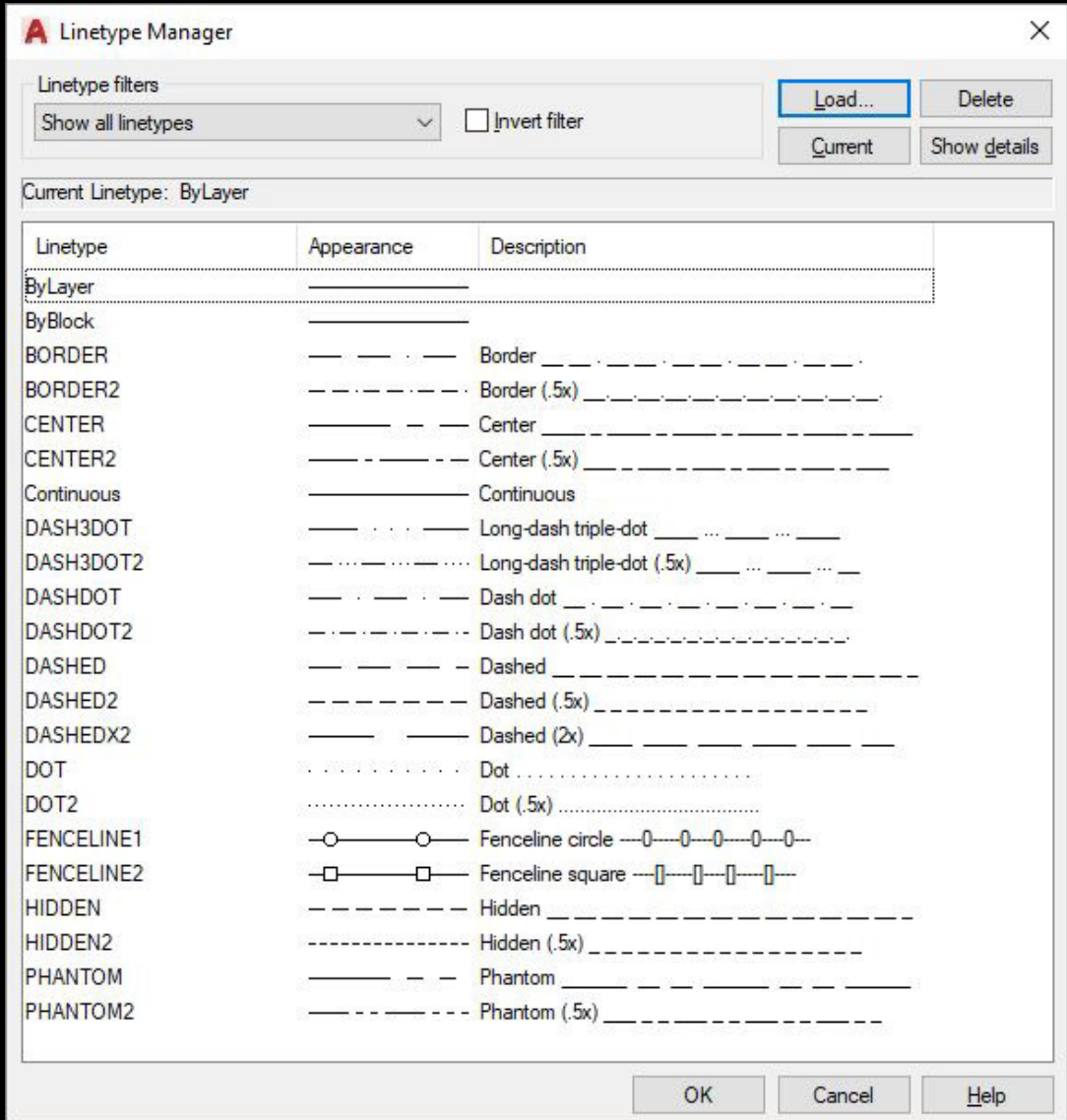


...in 100% black, 6 incrementally lighter shades of gray, and 3 colors.

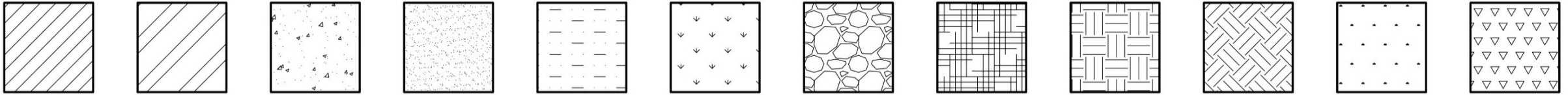
Line types

Linetypes preloaded in templates.

Use universal ltscaling.



Hatch Patterns



Hatch patterns in templates with
annotative scaling

Logo



**UNIVERSITY OF
GEORGIA**

**College of
Environment + Design**

Logo in templates as CAD entities

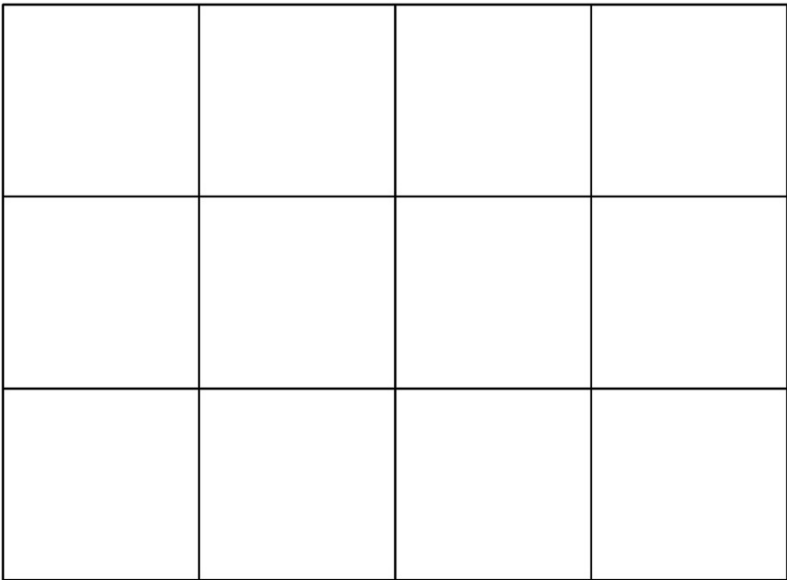
Details

Scale up detail size template in model space based on desired detail scale and associated scale factor.

Use Detail Reference Grid as an alignment tool for placing details into a titleblock sheet.



24x36 V DETAIL SIZE



24x36 V DETAIL GRID

ARCHITECTURAL SCALE FACTORS	
$\frac{1}{256}''=1'-0''$	3072
$\frac{1}{128}''=1'-0''$	1536
$\frac{1}{64}''=1'-0''$	768
$\frac{1}{32}''=1'-0''$	384
$\frac{1}{16}''=1'-0''$	192
$\frac{3}{32}''=1'-0''$	128
$\frac{1}{8}''=1'-0''$	96
$\frac{3}{16}''=1'-0''$	64
$\frac{1}{4}''=1'-0''$	48
$\frac{3}{8}''=1'-0''$	32
$\frac{1}{2}''=1'-0''$	24
$\frac{3}{4}''=1'-0''$	16
$1''=1'-0''$	12
$1\frac{1}{2}''=1'-0''$	8
$3''=1'-0''$	4
$6''=1'-0''$	2

Detail Reference Grid for
24x36 sheet with vertical TB

Details

ARCHITECTURAL SCALE FACTORS	
$\frac{1}{256}"=1'-0"$	3072
$\frac{1}{28}"=1'-0"$	1536
$\frac{1}{64}"=1'-0"$	768
$\frac{1}{32}"=1'-0"$	384
$\frac{1}{16}"=1'-0"$	192
$\frac{3}{32}"=1'-0"$	128
$\frac{1}{8}"=1'-0"$	96
$\frac{3}{16}"=1'-0"$	64
$\frac{1}{4}"=1'-0"$	48
$\frac{3}{8}"=1'-0"$	32
$\frac{1}{2}"=1'-0"$	24
$\frac{3}{4}"=1'-0"$	16
$1"=1'-0"$	12
$1\frac{1}{2}"=1'-0"$	8
$3"=1'-0"$	4
$6"=1'-0"$	2

DETAIL AREA BLOCKS

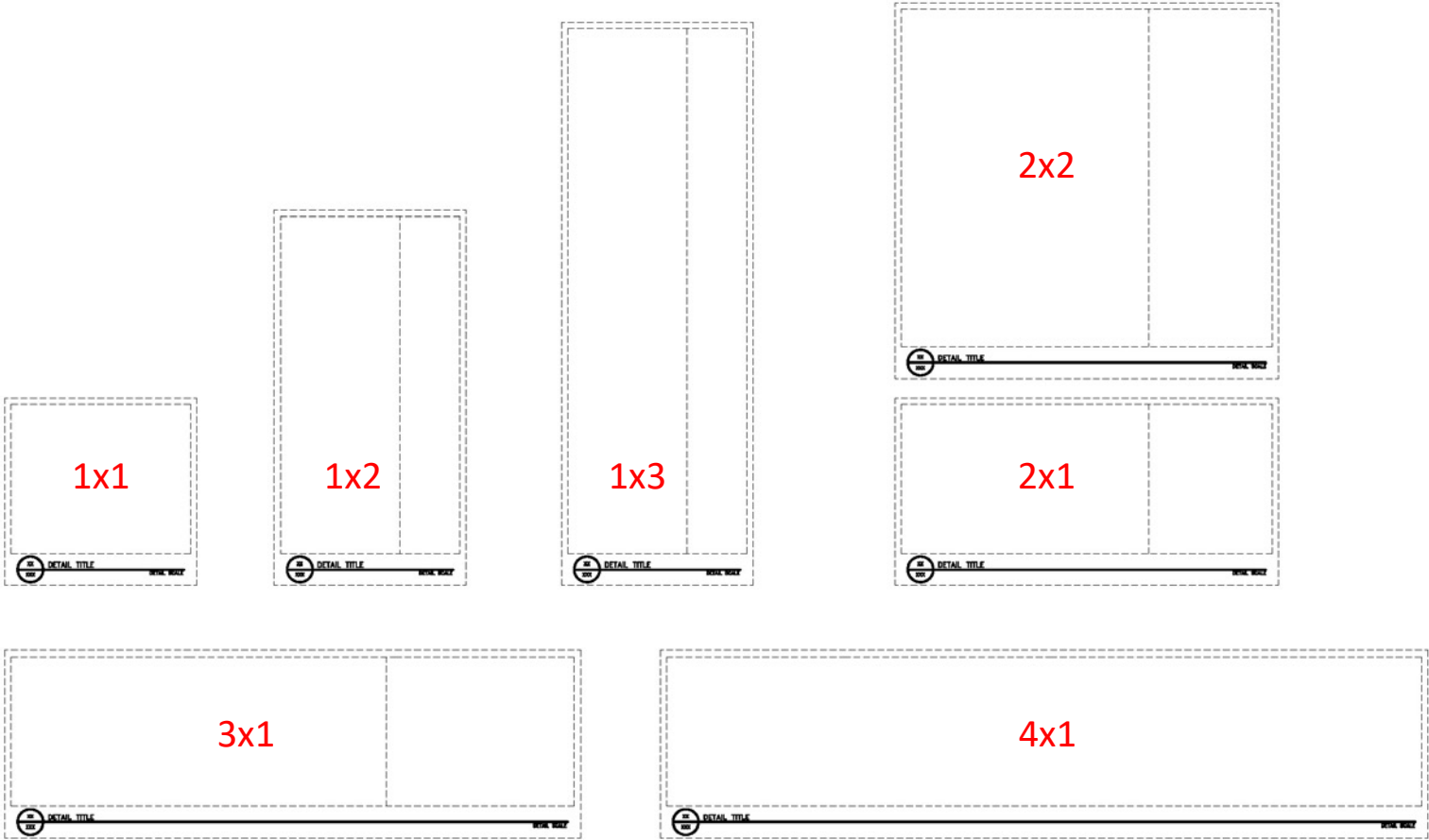
USE THESE BLOCKS TO DETERMINE THE SIZE OF YOUR DETAIL. TO DO THIS, COPY THE BLOCK YOU NEED, PASTE IT INTO YOUR DRAWING (CREATED USING ARCHITECTURAL UNITS) IN MODELSPACE, THEN SCALE IT UP BASED ON YOUR DETAIL SCALE, USING THE SCALE FACTORS IN THIS TABLE.

THE TITLEBLOCK INFORMATION IS INCLUDED AS EDITABLE ATTRIBUTES, JUST LIKE OUR CED STANDARD TITLEBLOCK, SO DOUBLECLICK TO EDIT THE TEXT.

Detail size templates and titles.

Based on Detail Reference Grid, choose the template based on detail size and complexity. More complex details may require more than one grid block. Remember, these are scaled up in model space based on desired detail scale and associated scale factor. Titles are blocks with editable attributes, so edit the text just as you would the CED Standard titleblock.

Dashed lines are non-printing.

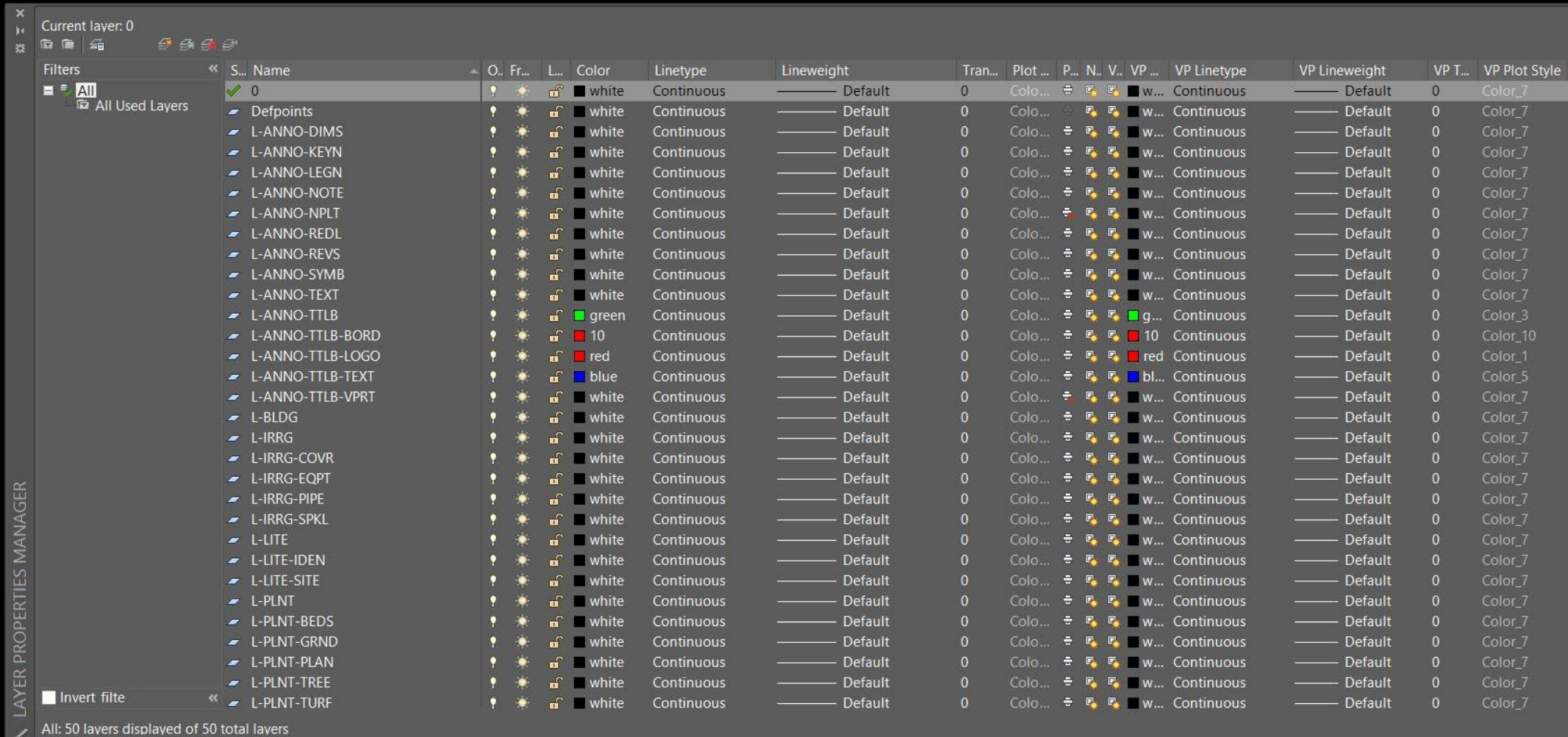


Layer Names

Standard layer names created in templates

Follow naming patterns for new layers

Use an X to indicate existing information. For example, L-PLNT-TREE-X for existing tree information. Make layers as needed, following the patterns.



Standard layer names created in template

Follow naming pattern for new layers

Detail Layer Names

Current layer: 0

Filters

All

All Used Layers

Invert filter

S..	Name	On	Fr...	VP Freeze	Lock	Plot	Color	VP Color	Linetype	VP Linetype	Lineweight	VP Lineweight
✓	0	☑	☀	🔒	🔒	🖨	white	white	CONTINUOUS	CONTINUOUS	Default	Default
	L-DETL-MEDM	☑	☀	🔒	🔒	🖨	green	green	CONTINUOUS	CONTINUOUS	Default	Default
	L-DETL-THCK	☑	☀	🔒	🔒	🖨	blue	blue	CONTINUOUS	CONTINUOUS	Default	Default
	L-DETL-THIN	☑	☀	🔒	🔒	🖨	yellow	yellow	CONTINUOUS	CONTINUOUS	Default	Default
	L-DETL-XTHK	☑	☀	🔒	🔒	🖨	red	red	CONTINUOUS	CONTINUOUS	Default	Default
	L-DETL-XTHN	☑	☀	🔒	🔒	🖨	10	10	CONTINUOUS	CONTINUOUS	Default	Default

All: 6 layers displayed of 6 total layers

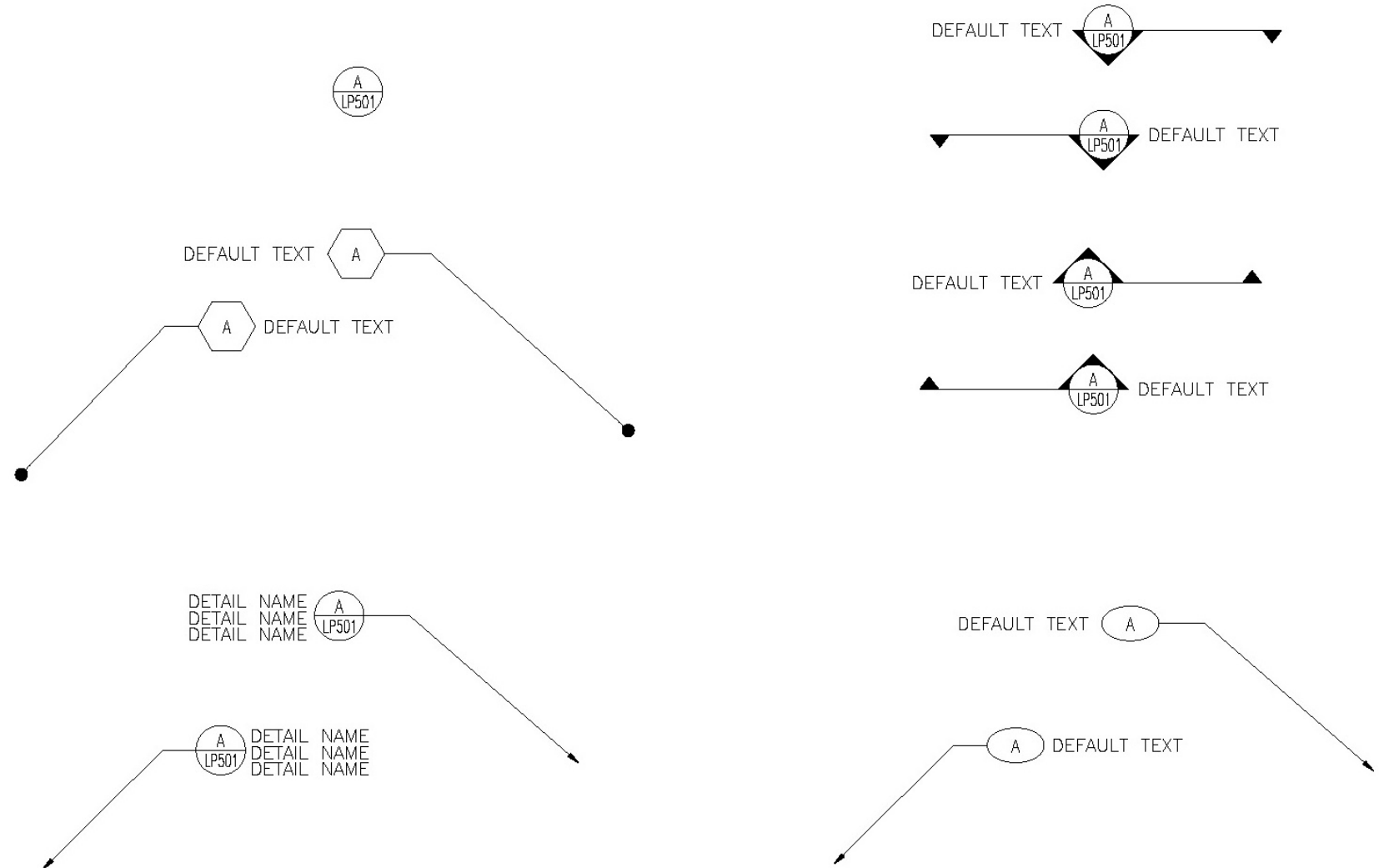
Search for layer

LAYER PROPERTIES MANAGER

Callouts

Standard callout and reference blocks are included in the download.

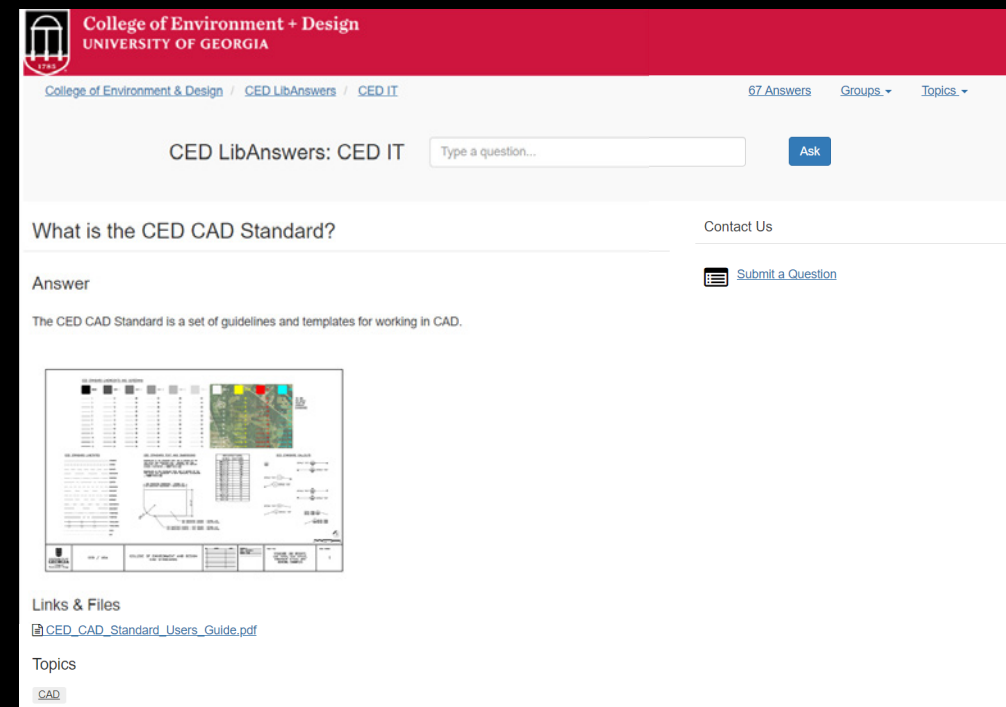
These are annotatively scaled blocks, so they adjust automatically based on your annotation scale.



Where do I download the Standard?

Navigate to the main CED CAD Standard FAQ at:
<https://answers.ced.uga.edu/IT/faq/395954>

Download the .ZIP and extract the files from it,
then go to the next page to see where to place
those files on your computer.



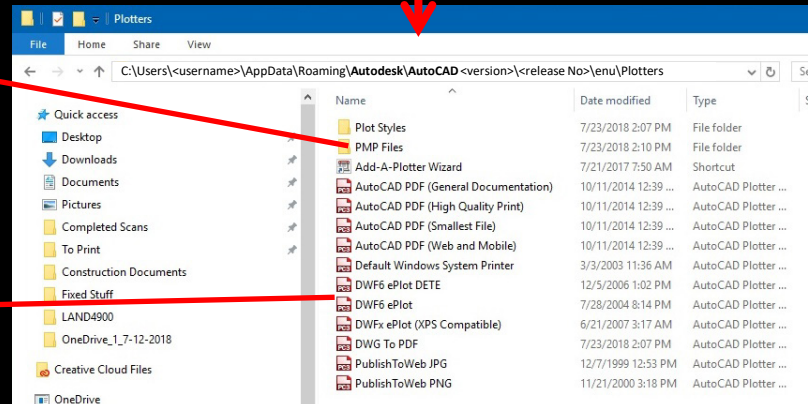
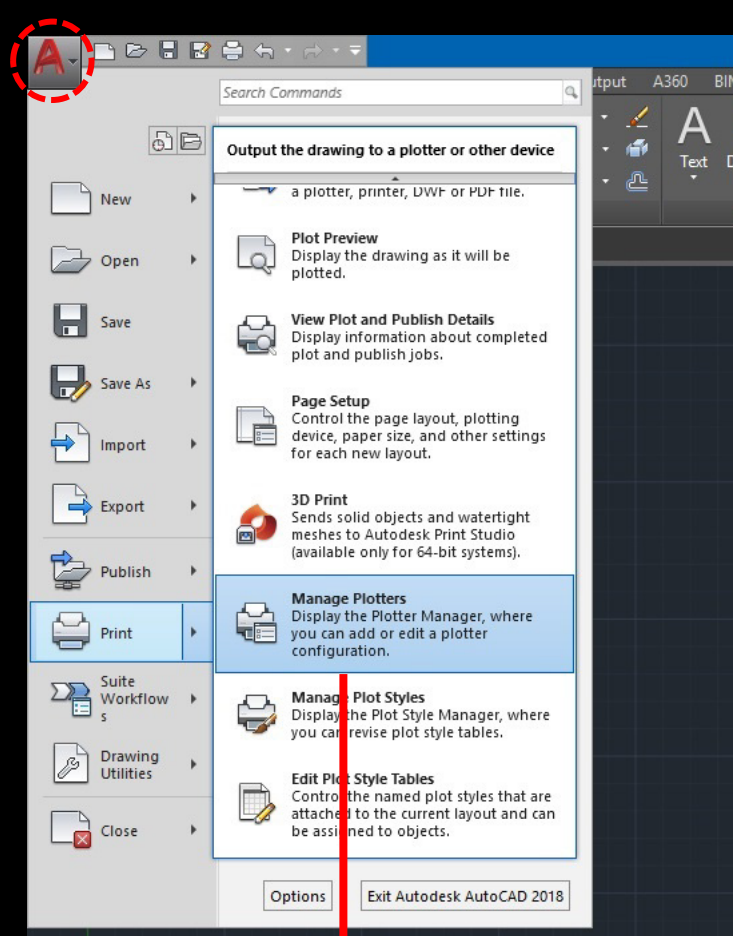
The screenshot displays the CED LibAnswers website interface. At the top, the header includes the University of Georgia logo and the text "College of Environment + Design UNIVERSITY OF GEORGIA". Below the header, a navigation bar shows "College of Environment + Design / CED LibAnswers / CED.IT" on the left, and "67 Answers", "Groups", and "Topics" on the right. The main content area features a search bar with the text "CED LibAnswers: CED IT" and a search input field with the placeholder "Type a question...". Below the search bar, the question "What is the CED CAD Standard?" is displayed. To the right of the question, there are links for "Contact Us" and "Submit a Question". The answer section, titled "Answer", states: "The CED CAD Standard is a set of guidelines and templates for working in CAD." Below the text, there is a thumbnail image of a CAD standard document. At the bottom, a section titled "Links & Files" contains a link to "CED_CAD_Standard_Users_Guide.pdf". A "Topics" section at the very bottom shows a tag for "CAD".

How do I install?

Option A (works for most)

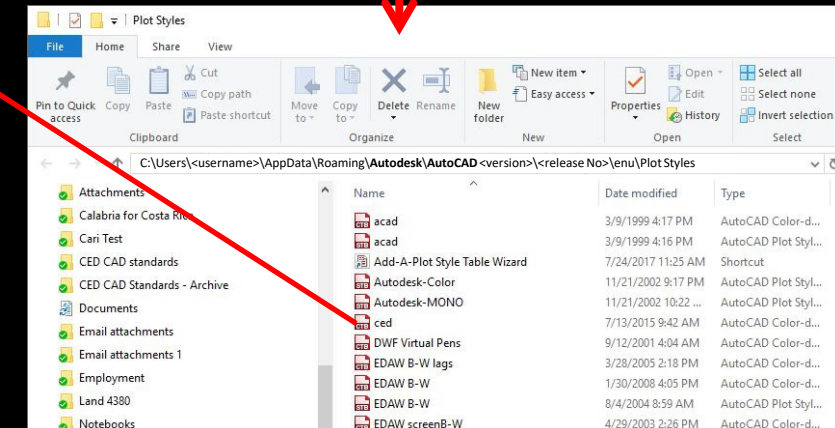
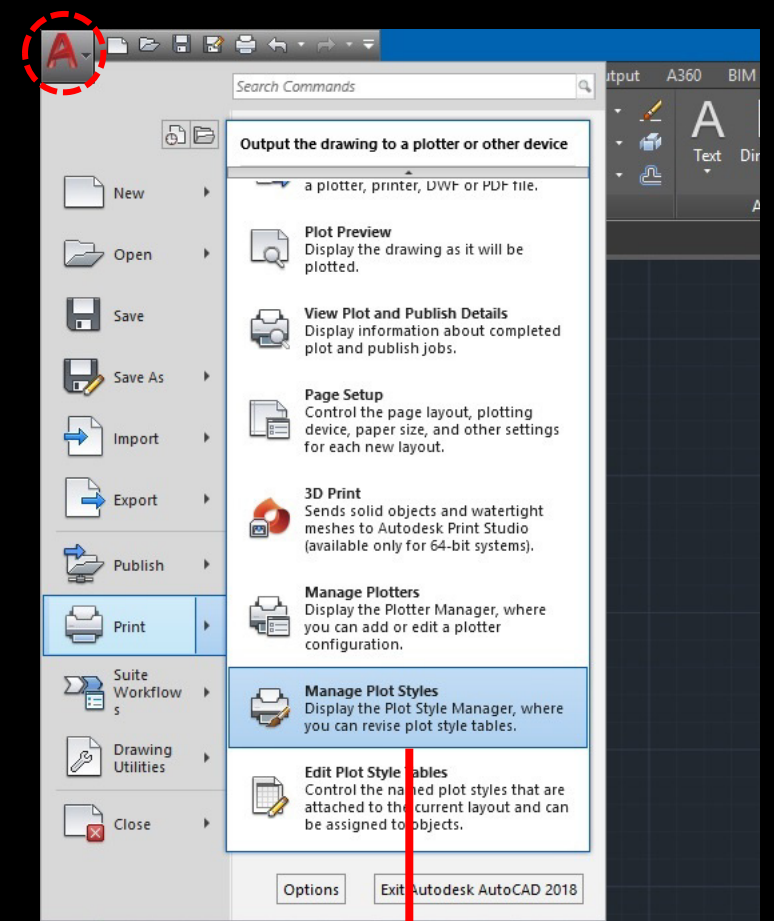
Three files need to be placed in specific locations on your computer.

Launch **MANAGE PLOTTERS** and **MANAGE PLOT STYLES** from AutoCAD to navigate to these locations.



DWG to PDF.pmp
placed in PMP
Files folder

DWG to PDF.pc3
placed in Plotters
folder



CED.ctb
placed in
Plot Styles
folder

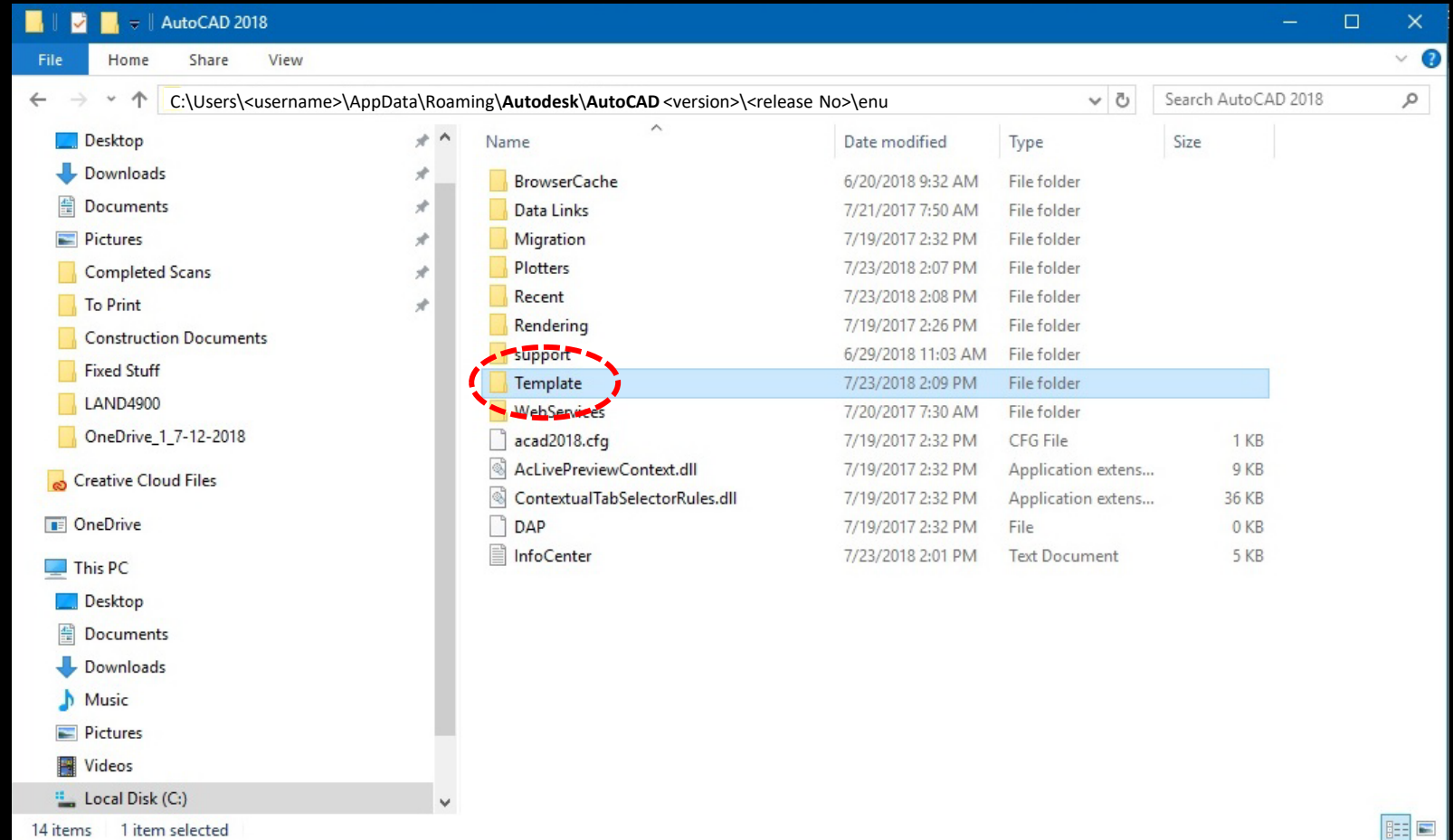
How do I install?

File Locations for AutoCAD Templates

The template files (.dwt) can be copied into place, allowing you to create new files with all the standard components.

From either the PLOT STYLES or PLOTTERS windows you opened in the previous step, navigate to the enu folder shown at right, then to the TEMPLATE folder. If you can't find this folder, be sure "Show Hidden Items" is enabled in your File Explorer window.

Copy the three template files (CED TEMPLATE ARCHITECTURAL.dwt, CED TEMPLATE DECIMAL.dwt, and CED TEMPLATE DECIMAL_METRIC.dwt) into the TEMPLATE folder.



Note that template in this case denotes an AutoCAD file saved with a .dwt extension. These function differently than files saved as a standard .dwg, such as those seen on the second slide of this presentation.

How do I install?

Option B

(if Option A fails)

Three files need to be placed in specific locations on your computer.

The AutoCAD OPTIONS command opens this screen, which you can use to manually locate file locations, as well as view or modify many other settings.

